

LUXBURG User Manual





Tripod Screens

Website: www.luxburgvisual.com
Email: support@luxburgvisual.com
Tel: 020 7237 4842

Table of Contents

SAFETY INFORMATION.....	3
IMPORTANT SAFETY INSTRUCTION	3
SETTING UP THE SCREEN	4
Dismantling the screen	5
Positioning the screen:	5
ADDITIONAL INFORMATION	5
Cleaning the screen.....	5
WARRANTY AND COPYRIGHT INFORMATION.....	6
Warranty	6
Copyright.....	6

SAFETY INFORMATION

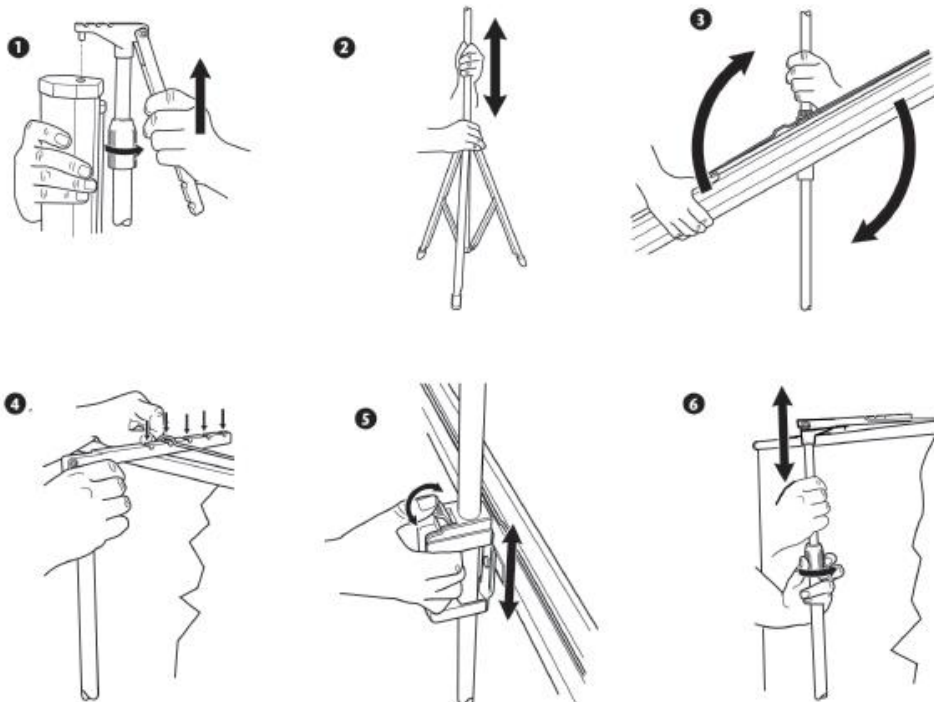
	Do not attempt to disassemble any part; this could lead to a shocking hazard
	This product is extremely flammable

IMPORTANT SAFETY INSTRUCTION

1. Follow all installation instructions. Failing to do so, may lead to serious consequences.
2. Screens must be installed in accordance with the instructions.
3. Ensure that the screen is mounted securely.
4. Operate within specified temperature and humidity range
5. Do not operate screen before it is installed on wall.
6. We strongly suggest that this item should be fitted by a professional, we will not be held responsible for any loss, incidental or consequential damage, or loss.

SETTING UP THE SCREEN

1. Carefully unpack the screen.
2. Always handle the screen in a levelled position on a clean surface.
3. In order to protect the screen from exposure to stains, keep the screen out of contact with foreign objects such as dust, saw dust, and/or liquids
4. Release the screen housing by loosening the tube lock and the upper tube by approximately 100mm .Tighten the tube lock again to avoid injury.
5. Pull apart the tripod feet. Push the top of the tripod stand down until the legs are fully extended; place the tripod firmly on the floor.
6. Rotate the screen housing into a horizontal position, ensuring that the screen bracket is uppermost.
7. Pull the screen out of the housing by lifting the brackets and hang it to the tripod hook. If titling on the screen is required, first attach the arm to the tripod hook.
8. To adjust the base height of the screen, release the handle lock and raise the screen housing to a suitable height by moving the handle up or down as required.
9. To adjust the upper height of the screen, loosen the tube lock(while holding the upper tube) and raise the screen to a desired height, then release the handle lock to sustain the position.



Dismantling the screen

1. Loosen the handle lock and push up the screen to a less tension position.
2. Loosen the tube block and lower the screen to a safe height for dismantling. Re-tighten the tube block before proceeding.
3. Unhook the screen bracket from the tripod hook and lower the screen carefully into the screen housing. Do not let go of the screen.
4. Rotate the screen housing to its original vertical position.
5. Pull the mechanism back up until the feet are fully closed
6. Secure the screen housing by lowering the upper tube until the tripod hook looks into place with the hole in the end cap of the screen housing.

Positioning the screen:

It is advised that you position the screen where there isn't any direct light. The more light that hits the screen, the more blurry the image will look. You are advised to mark out the screen placement on the wall for ease of positioning.

ADDITIONAL INFORMATION

Cleaning the screen

If you want to get the most use of the projector screen, you must clean it on a regular basis. It is important that you clean the screen the right way.

Depending on the fabric, different instructions may apply.

Try to avoid touching the screen with your hands

Matt and fibre Glass Fabrics

With a soft clean rag, slightly dust off your projector screen. It is recommended to follow this process every one to three days.

Glass Bead Fabric

We advise that you clean the screen on a daily basis.

Unfortunately you cannot use any cleaning solutions to clean glass bead screens as these will damage the surface. We recommend that you use a dry cloth to clean the screen.

NOTE: IT IS STRONGLY RECOMMENDED NOT TO USE ANY DETERGENTS, ABRASIVES OR SOLVENTS AS MANY OF THESE CHEMICAL SOLUTIONS CAN FADE YOUR SCREEN

WARRANTY AND COPYRIGHT INFORMATION

Warranty

All items come with a **1 year warranty** covering manufacturing defects only. This warranty excludes any damage caused by the user. If your item develops a fault due to a manufacturing defect during this period please contact us.

Please note that proof of purchase will be required for any claims made.

Copyright

Copyright © Luxburg Visual, all right reserved. This document must not be reproduced or distributed.